



NM Community Survey:

Completing your Data Collection Protocol

Data Collection Training
February 2022

You are experts in your
own communities



Photo credit: TruScribe

NEW MEXICO COMMUNITY SURVEY (NMCS)

AGENDA

IMPORTANT DATES FOR YOUR CALENDAR

CHANGES TO THE SURVEY FOR FY 22

PROTOCOL DEVELOPMENT

NEXT STEPS

What is NMCS?

- Gathers state- and community-level data on ATOD and prescription drug use
- Evaluates effectiveness of locally implemented environmental strategies on intervening variables and outcomes
- Last Year: FY 2021-10,691 surveys; **96.3% online**

NEW MEXICO COMMUNITY SURVEY (NMCS)

**GOAL = COLLECT REASONABLY REPRESENTATIVE
SAMPLE OF ADULTS IN THE COMMUNITY**

FEBRUARY 28-APRIL 29, 2022 (9 WEEKS)

Data is collected online or in-person
New Mexican residents only
18 or older
1 submission per person

Minimum Requirements for In-Person



Important Dates for Your Calendar

February 4- First draft of data collection protocol due to PIRE

February 7-11 - PIRE internal review of data collection protocols. PIRE will work with sites individually to prepare protocol for SEOW review

February 14-18 - SEOW reviews

February 21-25 - PIRE works with communities to finalize protocols

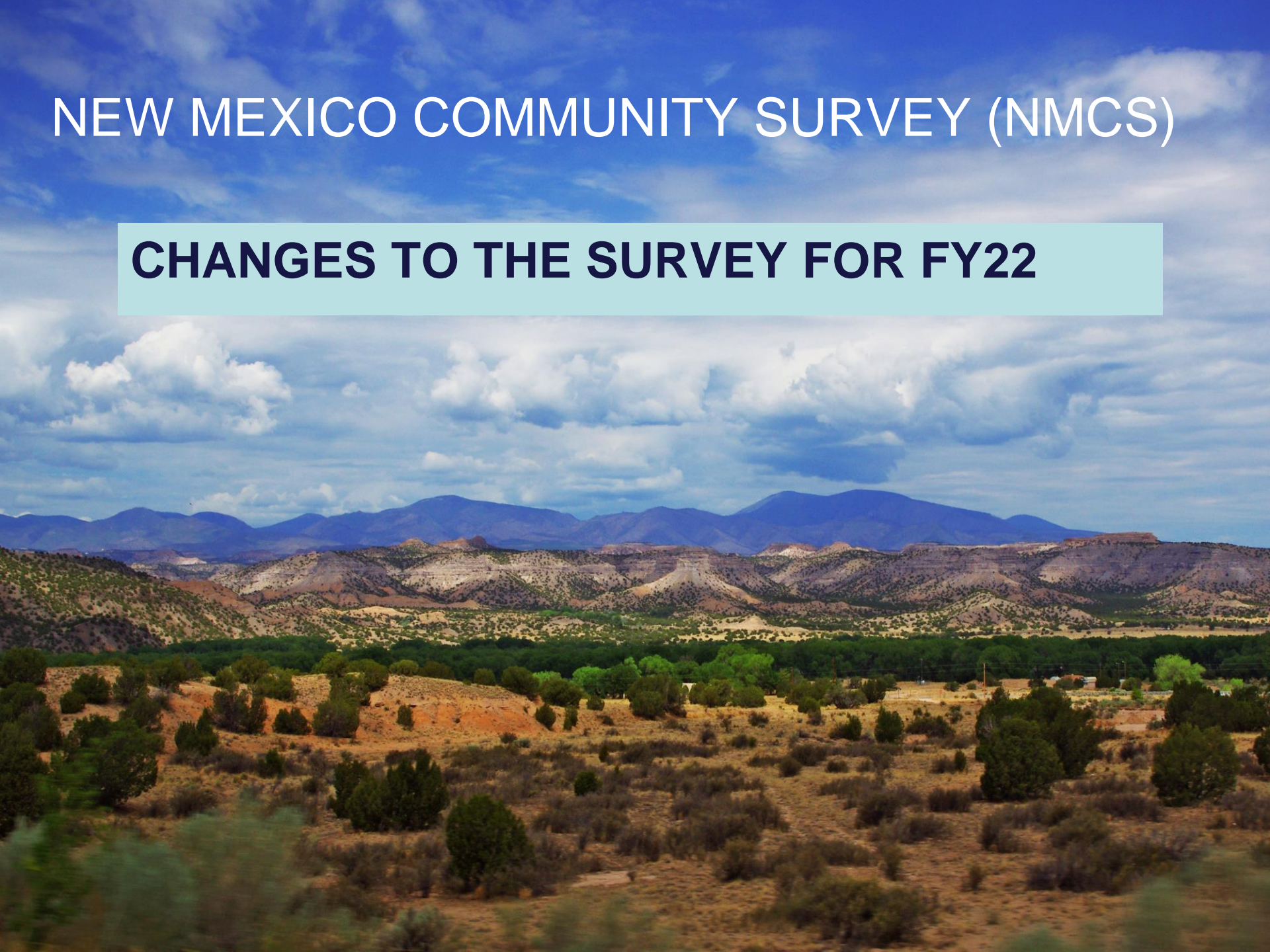
February 28- Data collection may begin with *approved protocol* and online survey goes live

Important Dates for Your Calendar

- **April 29** - Data collection ends
- **May 6** - Data files (for paper surveys) are due
- **June 1-15** - PIRE returns aggregated data files to local evaluators
- **June 30** - PIRE returns R-reports
- **July 15** - All End-of-Year reporting documents submitted to OSAP

NEW MEXICO COMMUNITY SURVEY (NMCS)

CHANGES TO THE SURVEY FOR FY22



Out with the old....

The logo for Qualtrics XM, featuring the word "qualtrics" in a black, lowercase, sans-serif font, followed by a registered trademark symbol (®) and the letters "XM" in a blue, uppercase, sans-serif font.

In with the new....

The logo for Alchemer, featuring the word "Alchemer" in a large, bold, orange, sans-serif font. Below it, the text "Formerly SurveyGizmo" is written in a smaller, black, sans-serif font.

The NM Community Survey- Core + 10 Optional Modules

- core (44)
- adverse childhood experiences (ACEs) (12)
- college community (1)
- community alcohol-related harms (10)
- gambling (5)
- marijuana (18)
- mental health (10)
- methamphetamine (7)
- additional opioid questions (9)
- tobacco (5)

poly-substance use (5) MANDATORY for PFS-20 funded communities; optional for others

Changes to NMCSFY 22 CORE

- Updating language/slang terms
- Adding employment questions
- Moving a few questions from supplemental modules to core

Changes to Supplemental Modules

Tobacco-updating terminology

Meth-removing redundant question

Marijuana-moving 2 items to core, updating terms, added question about safe storage for youth

Changes to Supplemental Modules

Mental Health- Added back “anxiety” question, added question on whether person who requested help was able to get help, and added new question about family member committing suicide

Opioid- updated stigmatizing language

PFS20- Moved some questions to Core for online only and added perception of risk question

NEW MEXICO COMMUNITY SURVEY (NMCS)

PROTOCOL DEVELOPMENT



Protocol Overview

- Every community must submit a data collection protocol to PIRE
- Must be approved prior to collecting any data

For those who have conducted the survey in previous years...

- Please use the FY 22 form. It has been updated (small changes) from FY21!
- You CAN copy and paste relevant approved plans from last year! 😊

New to data collection? Welcome!

Email PIRE if you do not have access to your FY21 files.

Choosing Optional Modules

- You may choose to add any of the additional modules to paper/Alchemer offline or on-line.
 - Remember how much additional questions **increase** the time to take the survey.
- **NOTE:** You may also add additional questions pertaining to your evaluation needs*
 - Questions must be approved by PIRE/SEOW and must include a statement that questions are directly from the provider and not OSAP. (See protocol document)

Incentives for Online Data Collection

- **Online incentives are only available if the participant takes the survey online**
 - No connection between your responses and your information for the drawing.
 - Only eligible to win the weekly incentive during the week you completed the survey.
- **Duplicate entries are not allowed.** (We remove duplicate entries from later drawings.)

Incentives for Participation



New Mexico Community Survey

Sponsored ·

Encuesta de la Comunidad de Nuevo México. Oportunidad de ganar \$100 o \$500 en una tarjeta de regalo. Participe en una encuesta anónima de la Comunidad de Nuevo México. Debe tener por lo menos 18 años, y residir en Nuevo México. Mantengamos saludable a Nuevo México!

[See Translation](#)



Es el abuso de opioides un problema en su comunidad?

[Learn More](#)



¡Toma la encuesta!

[Learn More](#)



Mantengamos Nuevo México Sano!

[Learn More](#)

Start Planning Now for Data Collection

While waiting for feedback on your protocol, **start getting your recruitment into place.**

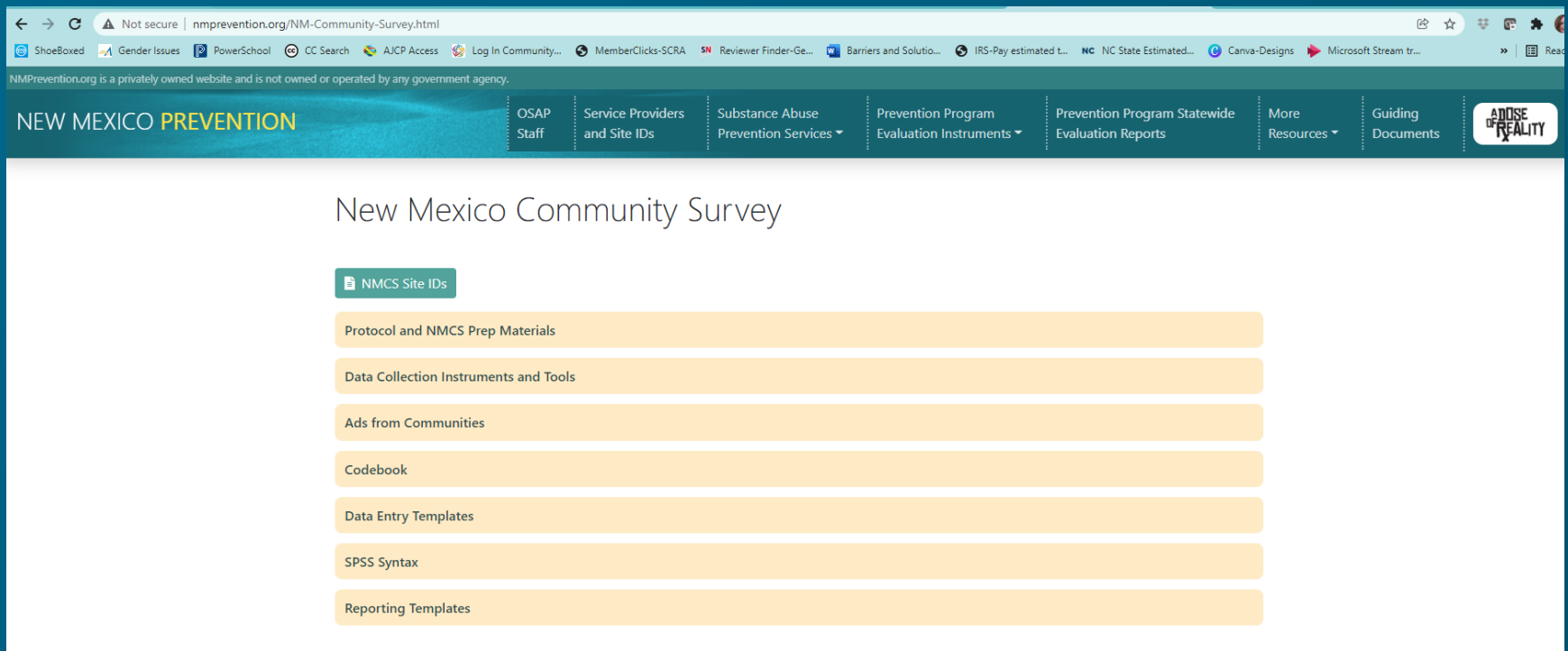
Final Words on Data Collection Protocol

- Remember that if you make a significant change to your protocol after it has been approved, *such as adding a site or changing an ad*, you must let PIRE know.
 - PIRE's IRB requires that we supervise data collection in this way. If data collection occurs in other ways, it could inadvertently incur a violation & all data collection must stop for the entire state

About that Budget....

- Reminder to come directly from OSAP.
- Please submit your budget directly to OSAP.

Where else can NMCS information be found?



The screenshot shows a web browser displaying the New Mexico Prevention website. The address bar shows the URL nmprevention.org/NM-Community-Survey.html. The website has a dark blue header with the text "NEW MEXICO PREVENTION" and a navigation menu with links: "OSAP Staff", "Service Providers and Site IDs", "Substance Abuse Prevention Services", "Prevention Program Evaluation Instruments", "Prevention Program Statewide Evaluation Reports", "More Resources", and "Guiding Documents". Below the header, the main content area is titled "New Mexico Community Survey". Under this title, there is a list of resources: "NMCS Site IDs", "Protocol and NMCS Prep Materials", "Data Collection Instruments and Tools", "Ads from Communities", "Codebook", "Data Entry Templates", "SPSS Syntax", and "Reporting Templates".

NEW MEXICO PREVENTION

OSAP Staff | Service Providers and Site IDs | Substance Abuse Prevention Services | Prevention Program Evaluation Instruments | Prevention Program Statewide Evaluation Reports | More Resources | Guiding Documents

New Mexico Community Survey

- NMCS Site IDs
- Protocol and NMCS Prep Materials
- Data Collection Instruments and Tools
- Ads from Communities
- Codebook
- Data Entry Templates
- SPSS Syntax
- Reporting Templates

<http://www.nmprevention.org/NM-Community-Survey.html>

NEW MEXICO COMMUNITY SURVEY (NMCS)

CONTACT US

DAVE CURREY 919-265-2622
DCURREY@PIRE.ORG

MARISSA ELIAS – 575-202-2232
MELIAS@PIRE.ORG

ASHLEY SIMONS-RUDOLPH -
ASIMONS-RUDOLPH@PIRE.ORG

KIM ZAMARIN
KZAMARIN@PIRE.ORG